

CIPHA WHAT'S NEW?

Year 2 Underway

Following the success of Year 1 in Cheshire & Merseyside, the CIPHA Programme is now being expanded across parts of the UK and second year of funding has been made available to further develop CIPHA in Cheshire & Mersey.

Read on to learn about the plans and priorities for Year 2.



Meet the Team

Jim Hughes and Lisa A'Hearne have moved onto the CIPHA Expansion Programme. Helen Duckworth replaces Jim as Programme Director for Cheshire & Merseyside, supported by Dale Knowles as Project Manager.



For more information click cipha.nhs.uk

CIPHA Live Reports

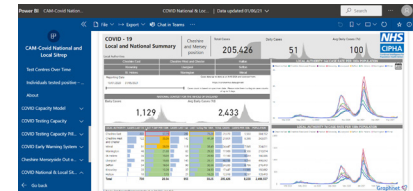
Live Reports

A recap on reports now live on CIPHA:

- COVID National & Local Sitrep (Cases and Mortality)
- COVID Hospital Admissions Report
- COVID In Hospital Demand Prediction Tool
- COVID Early Warning System
- COVID Epidemiology
- COVID Test Capacity (Labs)
- COVID Test Results on Admission
- COVID Out of Hospital Capacity & Demand Tracker
- COVID NIMS Vaccination Report
- COVID SMART Testing Report
- Enhanced Case Finder
- NIMS Flu Vaccination Report

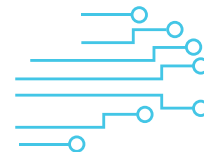
Access to CIPHA

Need Access?



Please email CIPHA@merseycare.nhs.uk to request access to CIPHA reports.

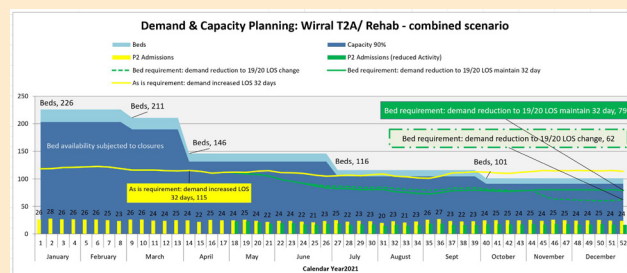
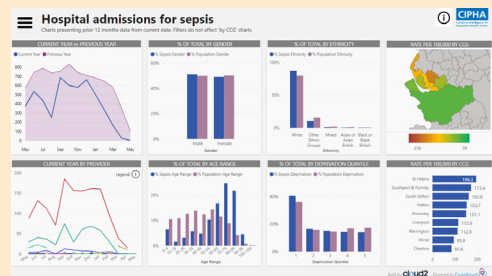
For more information on these stories click cipha.nhs.uk



CIPHA IN DEVELOPMENT

Coming soon

The **Clinical Outcomes Radar** is a set of metrics which have been developed in consultation with Medical Directors across Acute, MH and Community providers to assess the affect on the population of the Covid pandemic and highlight areas of concern.



In and out of hospital predicted capacity and demand modelling, split by elective, non-elective and COVID, by pathway and by place.



CIPHA NEWS



Combined Intelligence for Population Health Action

the latest in NHS data for you

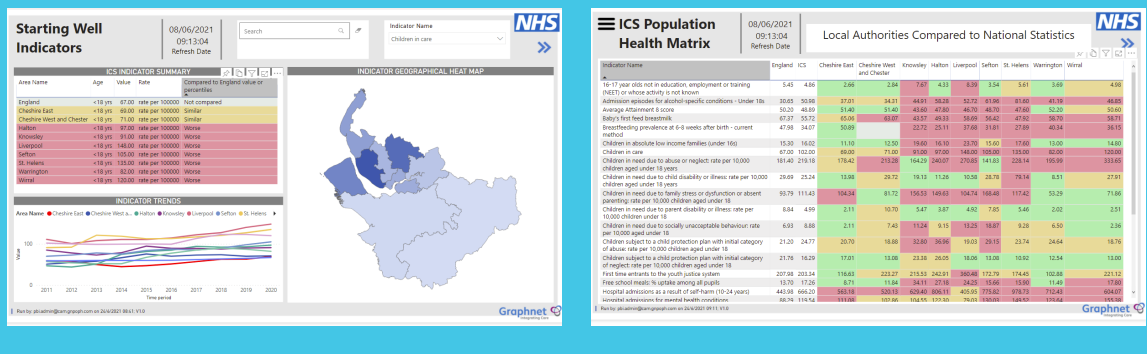
CIPHA YEAR 2 EMERGING PRIORITIES FOR CHESHIRE & MERSEYSIDE

In 2020 the Combined Intelligence for Population Health Action (CIPHA) programme was established. The project has set up a near real-time person level linked dataset across Cheshire and Merseyside and produced a set of combined population health intelligence that supports actions to manage the pandemic. A Data Sharing Agreement was put in place that enabled data sharing for purposes related to COVID.

As we move towards recovery, the CIPHA programme wishes to broaden the purpose of this sharing agreement to include using the data for more general population health intelligence; a new Data Sharing Agreement is presently being issued to enable this.

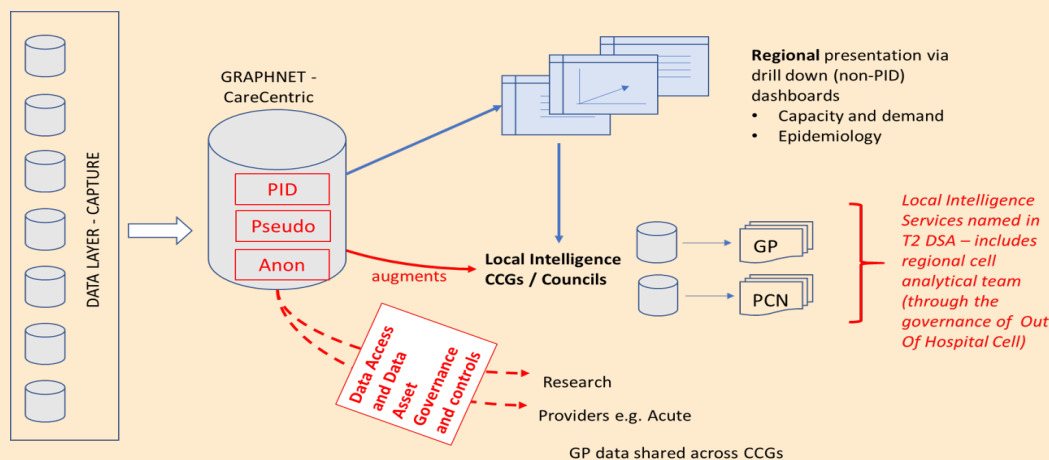
ICS Population Health

Development of a population health view across C&M to place level, with understanding of how health has been affected by COVID and health inequalities.



Data Mart Access

Secure, controlled data mart access to CIPHA for local, place based teams



CIPHA YEAR 2 EMERGING PRIORITIES FOR CHESHIRE & MERSEYSIDE

COVID Evaluations & Research

- MAST Testing
- Vaccine Efficacy
- New Variant
- Lateral Flow
- Events
- Telehealth/Self-care

Events Programme

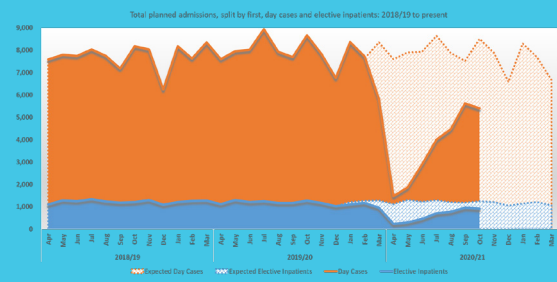
Evaluation of the National Opening up of events programme looking at the process as well as exploring attitudes towards social distancing and events - findings to be described in next month's newsletter.

Vaccination Research

Our primary aim is to model the relative risk of SARS CoV2 infection per unit change in vaccine coverage by geography-defined clusters in the Liverpool City Region, adjusted for baseline and transmission confounders. We will also assess the direct effect of vaccination in the vaccinated population, linked to data on variant type and dose (whether the 2nd dose of the vaccine was administered). In addition, where possible, data generated per small geographical areas will be used to assess how different vaccination strategies may have an impact on the risk of SARS-CoV-2 symptomatic infection, hospitalisations, and deaths.

COVID Activity & Performance Recovery

Reports looking at various measures to assess the impact of COVID and how they're recovering.



Population Health - Complex Lives

Stratification of the population who have physical, mental and social issues such as homeless, substance misuse, criminal justice involvement, domestic abuse and/or a history of Adverse Childhood Events. A breakdown of the epidemiological makeup of this population, understanding how they use services and a stratification of the factors that lead to poor outcomes. Re-identification of these cohort's people for the purposes of proactive management and direct care.

Waiting List Stratification for Inequality

A set of reports that stratify the waiting list for deprivation, BAME and other protected characteristics to understand the effects of the pandemic on vulnerable populations. Consideration of how this intelligence can be integrated into clinical decision making. Re-identification of individuals for the purposes of waiting list management and direct care.

Use Case Process

A process for the CIPHA team to take on, evaluate and prioritise new requests from across Cheshire & Merseyside.

